

Quick Installation

MOBOTIX M73 EN54

© 2023 MOBOTIX AG



BeyondHumanVision

MOBOTIX

Table of Contents

Table of Contents	2
Before You Start	5
Support	6
MOBOTIX Support	6
MOBOTIX eCampus	6
MOBOTIX Community	6
Safety Notes	7
Legal Notes	7
Notes on System Security	9
Drilling Template	11
Drilling Template PDF	12
Scope of Delivery	13
M73 EN54: Scope of Delivery	14
Connector Box RJ45: Scope of Delivery	15
Mounting Supplies: Scope of Delivery	16
Technical Specifications	19
Order Information	20
Hardware	20
Image Formats, Frame Rates, Image Storage	22
General Features	23
Video Analysis	24
Video Management Software	24
Sensor Modules	24
Dimensions of Sensor Modules	24
Weight of Sensor Modules	25
Supported Image Sensor Modules	25
Supported Thermal Sensor Modules (Pre-mounted on Thermal Front Plate)	26
Features Thermal Image Sensors	27
Supported Functional Modules (Pre-mounted on Front Plate)	28
Connector Box RJ45	28
Dimensions	30
Mounting	31
Before Mounting the Camera	32
Protective Measures	33
Installing an additional Sensor Module	34
Opening the Module Housing	38

Installing the Security Clips	40
Closing the Module Housing	41
Mounting Options	43
Tiltability when mounted	43
Mounting to a Wall	44
Mounting to a Pole	46
Connecting the camera	51
Connecting the Camera to the Network	52
Terminal Connectors	53
Finishing the Installation of the Camera	56
Operating the Camera	61
Getting Started	62
LED states	62
Boot Options of the Camera	63
Network Settings	65
Windows	66
Mac	67
Linux / Unix	67
Network Settings on the Camera in the Webbrowser	67
Network Settings on the Camera in MxMC	68
Camera Software in the Browser	71
Access the camera's website in the browser	73
Basic Settings	73
Configuring Sensor Modules	74
EN54 Compliant Camera Configuration	75
Create Visual Alarm Profile	75
Set an Alarm Acknowledge Softbutton	76
Edit the Softbutton Menu	77
Arming the Camera	77
Creating Thermal Events	78
Configuration of an action group	78
Acknowledge Alarm via Softbutton	80
Further Information	81
Maintenance	83
Opening the Camera Body	84
Replacing the microSD card	87
Cleaning the Camera and Lenses	88

Before You Start

This section contains the following information:

Support	6
MOBOTIX Support	6
MOBOTIX eCampus	6
MOBOTIX Community	6
Safety Notes	7
Legal Notes	7

Support

MOBOTIX Support

If you need technical support, please contact your MOBOTIX dealer. If your dealer cannot help you, he will contact the support channel to get an answer for you as quickly as possible.

If you have internet access, you can open the MOBOTIX help desk to find additional information and software updates.

Please visit www.mobotix.com > [Support](#) > [Help Desk](#).



MOBOTIX eCampus

The MOBOTIX eCampus is a complete e-learning platform. It lets you decide when and where you want to view and process your training seminar content. Simply open the site in your browser and select the desired training seminar.

Please visit www.mobotix.com/ecampus-mobotix.



MOBOTIX Community

The MOBOTIX community is another valuable source of information. MOBOTIX staff and other users are sharing their information, and so can you.

Please visit community.mobotix.com.



Safety Notes

- This product must not be used in locations exposed to the dangers of explosion.
- Do not use this product in a dusty environment.
- Protect this product from moisture or water entering the housing.
- Install this product as outlined in this document. A faulty installation can damage the product!
- This equipment is not suitable for use in locations where children are likely to be present.
- When using a Class I adapter, the power cord shall be connected to a socket-outlet with proper ground connection.
- To comply with the requirements of EN 50130-4 regarding the power supply of alarm systems for 24/7 operation, it is highly recommended to use an uninterruptible power supply (UPS) for backing up the power supply of this product.

Legal Notes

Legal Aspects of Video and Sound Recording

You must comply with all data protection regulations for video and sound monitoring when using MOBOTIX AG products. Depending on national laws and the installation location of the cameras, the recording of video and sound data may be subject to special documentation or it may be prohibited. All users of MOBOTIX products are therefore required to familiarize themselves with all applicable regulations and to comply with these laws. MOBOTIX AG is not liable for any illegal use of its products.

Declaration of Conformity

The products of MOBOTIX AG are certified according to the applicable regulations of the EC and other countries. You can find the declarations of conformity for the products of MOBOTIX AG on www.mobotix.com under **Support > Download Center > Marketing & Documentation > Certificates & Declarations of Conformity**.

RoHS Declaration

The products of MOBOTIX AG are in full compliance with European Unions Restrictions of the Use of Certain Hazardous Substances in Electrical and Electronic Equipment (RoHS Directive 2011/65/EC) as far as they are subject to these regulations (for the RoHS Declaration of MOBOTIX, please see www.mobotix.com, **Support > Download Center > Marketing & Documentation > Brochures & Guides > Certificates**).

Disposal

Electrical and electronic products contain many valuable materials. For this reason, we recommend that you dispose of MOBOTIX products at the end of their service life in accordance with all legal requirements and regulations (or deposit these products at a municipal collection center). MOBOTIX products must not be disposed of in household waste! If the product contains a battery, please dispose of the battery separately (the corresponding product manuals contain specific directions if the product contains a battery).

Disclaimer

MOBOTIX AG does not assume any responsibility for damages, which are the result of improper use or failure to comply to the manuals or the applicable rules and regulations. Our General Terms and Conditions apply. You can download the current version of the **General Terms and Conditions** from our website at www.mobotix.com by clicking on the corresponding link at the bottom of every page.

FCC Disclaimer

This equipment has been tested and found to comply with the limits for a Class A digital device, pursuant to part 15 of the FCC Rules. These limits are designed to provide reasonable protection against harmful interference when the equipment is operated in a commercial environment. This equipment generates, uses, and can radiate radio frequency energy and, if not installed and used in accordance with the instruction manual, may cause harmful interference to radio communications. Operation of this equipment in a residential area is likely to cause harmful interference in which case the user will be required to correct the interference at his own expense.

Notes on System Security

To protect the camera against security risks in data technology, the following measures are recommended after the installation has been completed:

MxManagementCenter:

- Menu **View > Wizards & Tools > Secure System:**
 - **Change camera factory default password:** ✓
 - **Enable encrypted HTTPS:** ✓
 - **Disable public access:** ✓
 - **User Management** (for all users):
 - **Force Complex Password:** ✓
 - **Log out on Inactivity:** After 5 min

User interface of the camera in the browser:

- **Admin Menu > Network Setup > Web Server:**
 - **Enable MxWeb:** –
 - **Enable intrusion detection:** ✓
 - **Notification threshold:** 10
 - **Timeout:** 60 minutes
 - **Block IP Address:** ✓

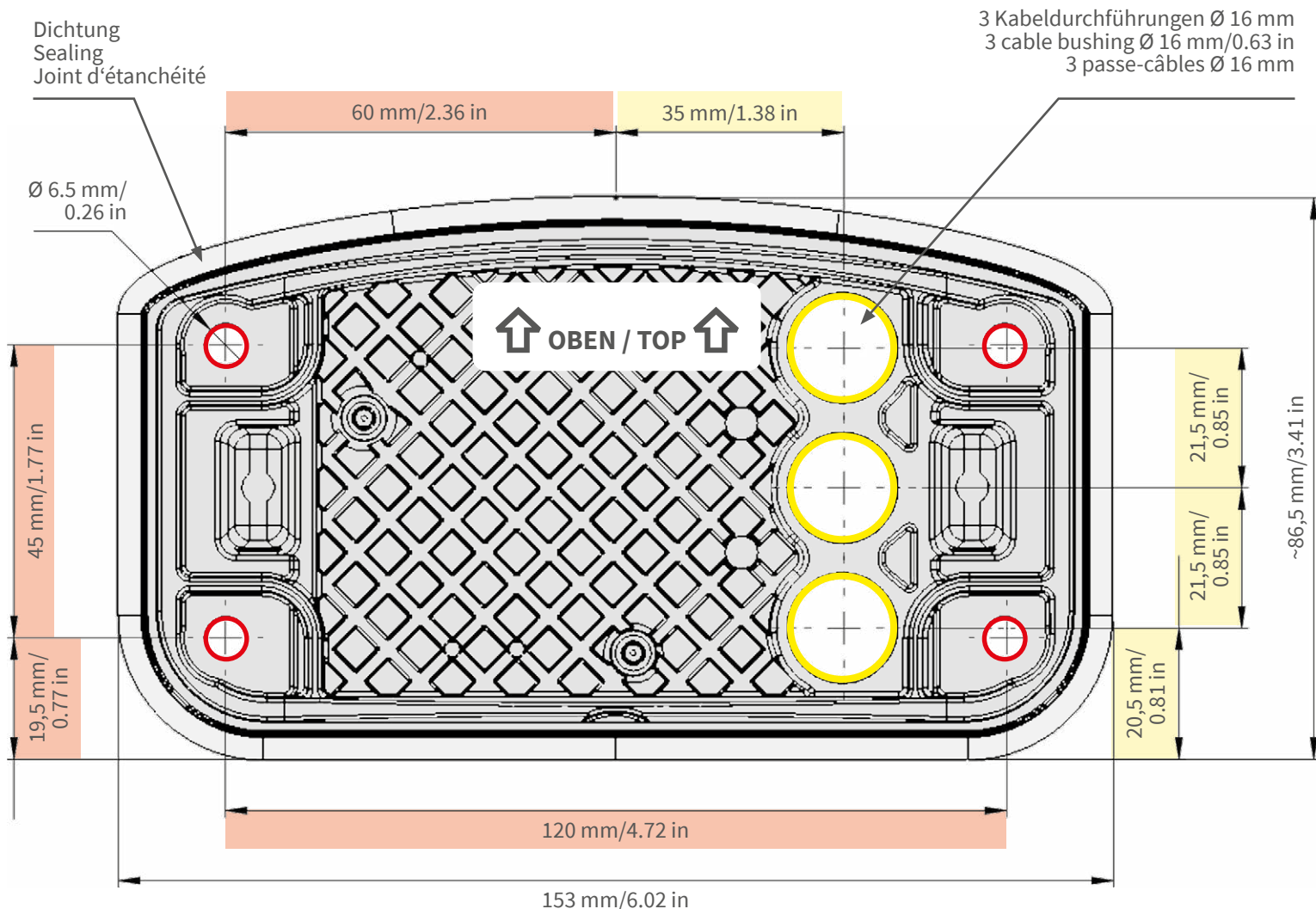
For more information on this new feature, please read the «Cyber Protection Guide» on www.mobotix.com (under Support > Download Center > Documentation > Brochures & Guides > Cyber Security).

Drilling Template

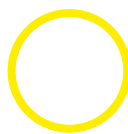
Open this file in a PDF viewer (Acrobat Reader, Foxit Reader, or similar) and print the file **without scaling (original size)**.

NOTE! Download the drilling template from the MOBOTIX website: www.mobotix.com > [Support](#) > [Download Center](#) > [Marketing & Documentation](#) > [Drilling Templates](#).

CAUTION! Always print or copy the drilling template at 100% of the original size!



- Bohrungen für Befestigungsschrauben Ø 5 mm
- Holes for mounting screws 5 mm diameter
- Trous pour les vis de montage de 5 mm diamètre



- Kabeldurchführungen Ø 16 mm
- Cable bushings 16 mm/0.63 in diameter
- Passe-câbles de 6 mm diamètre

Installation nur auf ebener Fläche! Unebenheiten dürfen 0,5 mm nicht überschreiten!

Installation only on level surface! Unevenness must not exceed 0.5 mm/0.02 in!

Montage uniquement sur une surface plane ! Les inégalités ne doivent pas dépasser 0,5 mm !



Nur in Originalgröße kopieren oder ausdrucken!

Always copy or print at 100% of original size!

Copier ou imprimer uniquement aux dimensions d'origine !

Scope of Delivery

This section contains the following information:

M73 EN54: Scope of Delivery	14
Connector Box RJ45: Scope of Delivery	15
Mounting Supplies: Scope of Delivery	16

M73 EN54: Scope of Delivery



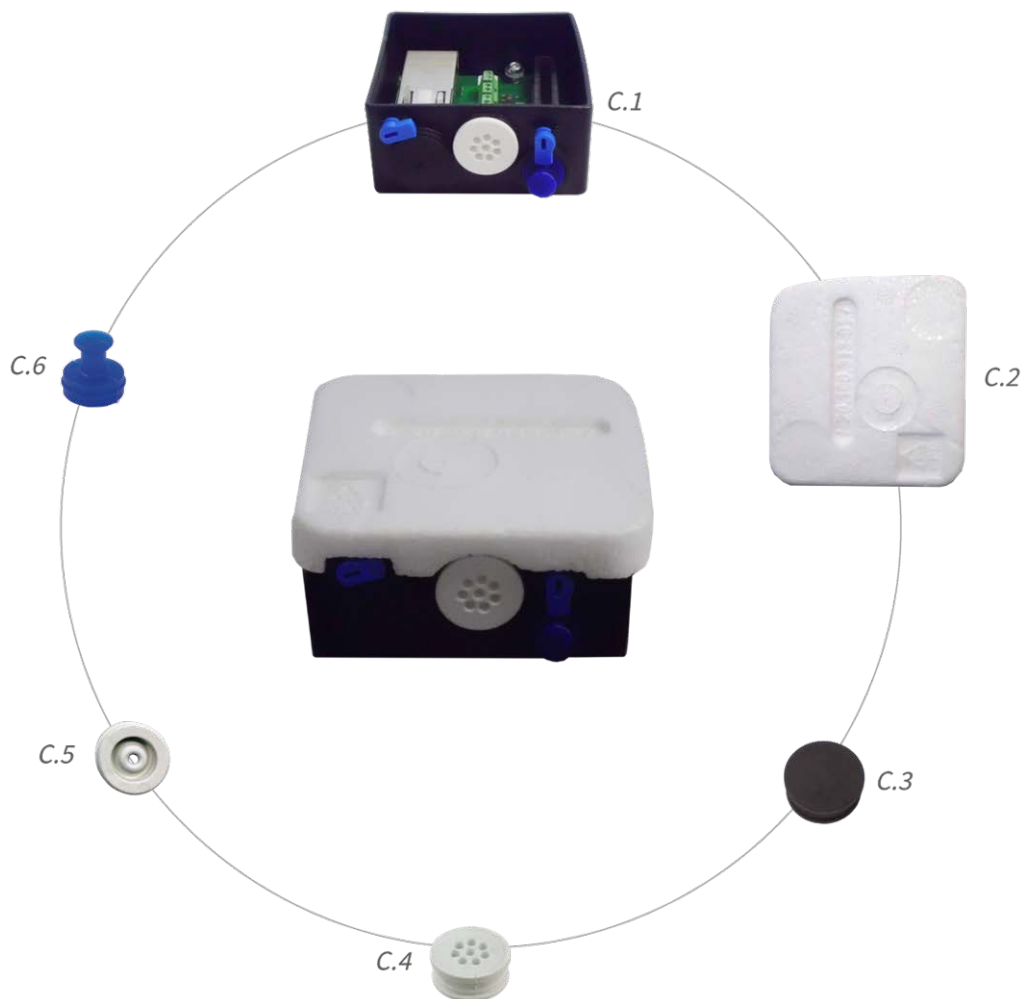
Scope of delivery M73 EN54 Body

Item	Count	Description
1.1	1	M73 EN54 Camera pre-assembled with Thermal TR module, Multisense module and Blind module
1.2	1	Blind module (pre-installed, must be installed when using only two sensor modules)
1.3	1	Mounting plate with wall sealing (installed), two standard plugs (installed), and RJ54 connector box.
1.4	1	MOBOTIX Ethernet patch cable, 50 cm/19.7 in with sealing

Scope of delivery M73 EN54 Body

Item	Count	Description
1.5	1	SD card 8 GB (installed)
1.6	1	Mounting supplies (see Mounting Supplies: Scope of Delivery, p. 16)
1.7	1	Important Safety Information
1.8	1	Sticker with EAN number of camera
1.9	1	Sticker with IP address of camera

Connector Box RJ45: Scope of Delivery



Scope of Delivery

Mounting Supplies: Scope of Delivery

Scope of Delivery M73 EN54 Connector Box RJ45

Item	Count	Description
C.1	1	Connector box RJ45 black with rubber plug black, rubber plug single-wire white, USB plug blue (installed)
C.2	1	Protective cover for connector box polystyrene white (installed)
C.3	1	Rubber plug black (installed)
C.4	1	Rubber plug single-wire white (installed)
C.5	1	Rubber plug cable dia. 3.5 mm white (to replace C.5)
C.6	1	USB plug connector box blue (installed)

Mounting Supplies: Scope of Delivery



Scope of Delivery M73 EN54 Mounting Supplies

Item	Count	Description
M.1	1	Module wrench (gray)
M.2	1	Lens wrench blue
M.3	3	Housing plug silicone white
M.4	3	Security clips plastic red
M.5	2	Cable tie black
M.6	1	Allen wrench 5 mm
M.7	1	Allen wrench 2.5 mm
M.8	1	TORX wrench TX20
M.9	1	TORX wrench TX10
M.10	1	Screwdriver yellow
M.11	4	Washer dia. 6.4 mm plastic white
M.12	4	Wood screw 4.5x60 mm
M.13	4	Dowel S8
M.14	3	Oval head screw with shank 2.5x6.5 mm stainless steel black (pre-assembled)
M.15	2	Cover for screw plastic white

Technical Specifications

This section contains the following information:

Order Information	20
Hardware	20
Image Formats, Frame Rates, Image Storage	22
General Features	23
Video Analysis	24
Video Management Software	24
Sensor Modules	24
Dimensions of Sensor Modules	24
Weight of Sensor Modules	25
Supported Image Sensor Modules	25
Supported Thermal Sensor Modules (Pre-mounted on Thermal Front Plate)	26
Features Thermal Image Sensors	27
Supported Functional Modules (Pre-mounted on Front Plate)	28
Connector Box RJ45	28
Dimensions	30

Order Information

	Order Code:	Camera Type / Bundle
20.102.712- 01	Mx-M73TA-B336R100-EN54	M73A TR Camera (B) CIF (45°)
20.102.713- 01	Mx-M73TA-B336R150-EN54	M73A TR Camera (B) CIF (25°)
20.102.714- 01	Mx-M73TA-B336R280-EN54	M73A TR Camera (B) CIF (17°)
20.102.715- 01	Mx-M73TA-B640R050-EN54	M73A TR Camera (B) VGA (90°)
20.102.716- 01	Mx-M73TA-B640R080-EN54	M73A TR Camera (B) VGA (69°)
20.102.717- 01	Mx-M73TA-B640R100-EN54	M73A TR Camera (B) VGA (45°)
20.102.718- 01	Mx-M73TA-B640R150-EN54	M73A TR Camera (B) VGA (32°)

Hardware

Feature	Properties
Image sensor (color or B&W sensor)	up to 4K UHD 3840x2160, 16:9, 1/1,8"
Light sensitivity	<ul style="list-style-type: none"> ▪ Color sensor (day): 0,1 lx @ 1/60s; 0,005 lx @ 1s ▪ BW sensor (night): 0,02 lx @ 1/60s; 0,001 lx @ 1s
Exposure control	Manual and automatic mode 1 s to 1/16,000 s
IK protection class	IK10 (housing)
IP / NEMA protection class	IP66 / NEMA 4X
Operating temperature range	-40 to 65 °C/-40 to 149 °F
Min. cold start temperature	-30 °C/-22 °F
Relative Humidity	95 % non-condensing
Internal DVR, out of the box	MicroSD card (8 GB), MxPEG+ recording only
I/Os	see Connector Box RJ45 , p. 28

Feature	Properties
Microphone/Speaker	<ul style="list-style-type: none"> ■ Functional audio module, max. 4.5 Watt (see Functional Modules) ■ Microphone Sensitivity: -35 +/-4 dB (0 dB = 1 V/pa, 1 kHz) ■ Speaker: 0.9 W at 8 Ohm
Passive infra-red sensor (PIR)	Available with functional module, max. 4.5 Watt (see Functional Modules)
Infra-red illumination	Three functional modules for wide-angle, standard, and tele lenses
Range of infra-red illumination	Up to 30 m/100 ft (may be more depending on scene)
Shock detector (tamper detection)	Yes
Max. power consumption	max. 25 W
Electrical surge protection	integrated with Connector Box LSA (not part of the scope of delivery)
PoE standard	PoE Plus (802.3at-2009)/Class 4
Interfaces	<ul style="list-style-type: none"> ■ Ethernet 1000BaseT ■ miniUSB / USB2.0 High-Speed ($V_{out} = 5,1V$, $I_{out} = 0,9A$, $P_{out} = 4,5W$)
Mounting Options	Wall- or pole-mountable (with Pole Mount accessory)
Dimensions (height x width x depth)	228 x 153 x 232 mm
Weight without sensor modules	Approx. 2.5 kg/5.5 lb
Housing	Aluminum, PBT-30GF
Standard accessories	See MOBOTIX M73 EN54: Scope of Delivery
Tiltability of camera	Horizontal: 2 x 180 degrees Vertical: 110 degrees
Detailed technical documentation	www.mobotix.com > Support > Download Center > Marketing & Documentation
MTBF	80,000 hours
Certificates	EN 50121-4, EN 55032, EN 55035, EN54-10:2002, EN54-10:2002/A1:2005, EN 61000-6-1, EN 61000-6-2, EN 61000-6-3, EN 61000-6-4, EN 62368-1, EN 63000, AS/NZS CISPR32, 47 CFR Part 15b

Technical Specifications

Image Formats, Frame Rates, Image Storage

Feature	Properties
Protocols	DHCP (client and server), DNS, ICMP, IGMP v3, IPv4, IPv6, HTTP, HTTPS, FTP, FTPS, NFS, NTP (client and server), RTP, RTCP, RTSP, SFTP, SIP (client and server), SMB/CIFS, SNMP, SMTP, SSL/TLS 1.3, TCP, UDP, VLAN, VPN, Zeroconf/mDNS S
Manufacturer warranty	5 years

Image Formats, Frame Rates, Image Storage

Feature	Properties
Available video codecs	<ul style="list-style-type: none">▪ H.264, H.265▪ MxPEG+▪ MJPEG
Image resolutions	VGA 640x360, XGA 1024x576, HD 1280x720, FullHD 1920x1080, QHD 2560x1440, 4K UHD 3840x2160
Multi streaming	H.264, H.265 with triple streaming
Multicast stream via RTSP	Yes
Max. image H.264 resolution	<ul style="list-style-type: none">▪ One thermal sensor: VGA, 640x480▪ One thermal sensor, one optical sensor: 1xVGA, 640x480, 1x 4K UHD, 3840x2160 (8MP)
Max. frame rate	MxPEG: 20@4K, H.264: 30@4K, H.265: 30@4K

General Features

Feature	Properties
Software features	<ul style="list-style-type: none"> ▪ H.264, H.265 Multistreaming ▪ Multicast stream via RTSP ▪ Digital pan, tilt, zoom/vPTZ (up to 8x zoom) ▪ Genetec protocol integration ▪ Custom exposure zones ▪ Snapshot recording (pre/post-alarm images) ▪ Continuous recording ▪ Event recording ▪ Time-controlled flexible event logic ▪ Weekly schedules for recordings and actions ▪ Event video and image transfer via FTP and email ▪ Playback and QuadView via web browser ▪ Animated logos on the image ▪ Master/Slave functionality ▪ Privacy zone scheduling ▪ Remote alarm notification (network message) ▪ Programming interface (HTTP-API) ▪ MOBOTIX MessageSystem
ONVIF compatibility	Profile G, S, T
Master/Slave functionality	Yes
Remote alarm notification	email, network message (HTTP/HTTPS), SNMP, MxMessageSystem
DVR / image storage management	<ul style="list-style-type: none"> ▪ MxPEG+ only ▪ Internal microSD card (SDHC/SDXC), 8 GB out of the box ▪ On external USB and NAS devices, ▪ Different streams for live image and recording ▪ MxFFS with buffered archive, pre- and post-alarm images, storage monitoring with error reporting
Camera and data security	User and group management , SSL connections, IP-based access control, IEEE 802.1X, intrusion detection, digital image signature

Video Analysis

Feature	Properties
Video motion detection	Yes
MxActivitySensor (Optical sensor only)	Version 1.0, 2.1 and object-based MxAnalytics AI
ONVIF compatibility	Profile S, T
MxAnalytics (Optical sensor only)	Heatmap, people counting & object-based counting
MOBOTIX App support	Yes

Video Management Software

Feature	Properties
MOBOTIX HUB	Yes www.mobotix.com > Support > Download Center > Software Downloads
MxManagementCenter	Yes (MxMC 2.2 and higher) www.mobotix.com > Support > Download Center > Software Downloads
MOBOTIX LIVE App	Yes Available in Android and iOS App Stores.

Sensor Modules

Dimensions of Sensor Modules

Dimensions (height x width)	58 x 42,5 (50 mm)
--------------------------------	-------------------

Weight of Sensor Modules

Sensor Module	Weight
Standard Sensor Modules	max. 150g
Functional Modules	max. 150g
Thermal Sensor Module	380g
PTMount Thermal	890g

Supported Image Sensor Modules

Sensor Module	Order Code
Sensor module with standard 45° lens	Mx-O-M7SA-8DN100
	Mx-O-M7SA-8D100
	Mx-O-M7SA-8N100
	Mx-O-M7SA-4DN100
Sensor module with tele lens 30°	Mx-O-M7SA-8DN150
	Mx-O-M7SA-8D150
	Mx-O-M7SA-8N150
	Mx-O-M7SA-4DN150
Sensor module with tele lens 15°	Mx-O-M7SA-8DN280
	Mx-O-M7SA-8D280
	Mx-O-M7SA-8N280
	Mx-O-M7SA-4DN280
Sensor module with wide angle lens 60°	Mx-O-M7SA-8DN080
	Mx-O-M7SA-8D080
	Mx-O-M7SA-8N080
	Mx-O-M7SA-4DN080

Technical Specifications

Sensor Modules

Sensor Module	Order Code
Sensor module with super wide angle lens 95°	Mx-O-M7SA-8DN050
	Mx-O-M7SA-8D050
	Mx-O-M7SA-8N050
	Mx-O-M7SA-4DN050
Sensor module with ultra wide angle lens 120° 4K	Mx-O-M7SA-8DN040
	Mx-O-M7SA-8D040
	Mx-O-M7SA-8N040
	Mx-O-M7SA-4DN040

For a complete list of lenses for MOBOTIX cameras, please see the Lens Table document for MOBOTIX 7 models on www.mobotix.com > [Support](#) > [Download Center](#) > [Marketing & Documentation](#) > [Lens Table](#).

Supported Thermal Sensor Modules (Pre-mounted on Thermal Front Plate)

CAUTION! Do not remove or replace the pre-installed thermal sensor module included in the scope of delivery. Otherwise, the camera will lose the EN54 certification.

Sensor Module	Order Code
CIF Thermal Radiometry 45° x 35°	Mx-O-M73TB-336R100
CIF Thermal Radiometry 25° x 19°	Mx-O-M73TB-336R150
CIF Thermal Radiometry 17° x 13°	Mx-O-M73TB-336R280
VGA Thermal Radiometry 90° x 69°	Mx-O-M73TB-640R050
VGA Thermal Radiometry 69° x 56°	Mx-O-M73TB-640R080
VGA Thermal Radiometry 45° x 37°	Mx-O-M73TB-640R100
VGA Thermal Radiometry 32° x 26°	Mx-OM73TB-640R150

The **Thermal Radiometry (TR)** variants automatically alarm when the temperature exceeds or falls below defined limits. This is crucial for the detection of fire or heat sources. Up to 20 different temperature events can be configured simultaneously in so-called TR windows or over the complete sensor image over a temperature range of -40 to 550 °C/ -40 to 1022 °F .

Features Thermal Image Sensors

Feature	Properties																
Thermal sensitivity	Typ. 50 mK, IR range 7.5 to 13.5 μm																
Temperature measurement range	-40 to 550 °C/ -40 to 1022 °F																
Thermal image sensor	Uncooled microbolometer, CIF: 336 x 256 pixels / VGA: 640 x 480																
Dimensions	336/640: 48,5x48,5x70 170g without front plate / 265g with front plate																
Max. image size	Can be scaled up to 3072 x 2048 (6MP), automatically scaled to size of MX sensor module																
Max. frame rate	9fps																
Pixel pitch	17 μm																
Field of view	<table border="1"> <thead> <tr> <th>Sensor Module</th> <th>FoV</th> </tr> </thead> <tbody> <tr> <td>336 xx 100</td> <td>45° x 35°; 2.27mr, focal 7.5mm, f/1.25</td> </tr> <tr> <td>336 xx 150</td> <td>25° x 19°; 1.31mr, focal 13mm, f/1.25</td> </tr> <tr> <td>336 xx 280</td> <td>17° x 13°; 0.90mr, focal 19mm, f/1.25</td> </tr> <tr> <td>640 xx 050</td> <td>90° x 69°; 2.27mr, focal 7.5mm, f/1.4</td> </tr> <tr> <td>640 xx 080</td> <td>69° x 56°; 1.89mr, focal 9mm, f/1.4</td> </tr> <tr> <td>640 xx 100</td> <td>45° x 37°; 1.31mr, focal 13mm, f/1.25</td> </tr> <tr> <td>640 xx 150</td> <td>32° x 26°; 0.90mr, focal 19mm, f/1.25</td> </tr> </tbody> </table>	Sensor Module	FoV	336 xx 100	45° x 35°; 2.27mr, focal 7.5mm, f/1.25	336 xx 150	25° x 19°; 1.31mr, focal 13mm, f/1.25	336 xx 280	17° x 13°; 0.90mr, focal 19mm, f/1.25	640 xx 050	90° x 69°; 2.27mr, focal 7.5mm, f/1.4	640 xx 080	69° x 56°; 1.89mr, focal 9mm, f/1.4	640 xx 100	45° x 37°; 1.31mr, focal 13mm, f/1.25	640 xx 150	32° x 26°; 0.90mr, focal 19mm, f/1.25
Sensor Module	FoV																
336 xx 100	45° x 35°; 2.27mr, focal 7.5mm, f/1.25																
336 xx 150	25° x 19°; 1.31mr, focal 13mm, f/1.25																
336 xx 280	17° x 13°; 0.90mr, focal 19mm, f/1.25																
640 xx 050	90° x 69°; 2.27mr, focal 7.5mm, f/1.4																
640 xx 080	69° x 56°; 1.89mr, focal 9mm, f/1.4																
640 xx 100	45° x 37°; 1.31mr, focal 13mm, f/1.25																
640 xx 150	32° x 26°; 0.90mr, focal 19mm, f/1.25																
Operating temperature	-40° to $+65^{\circ}\text{C}$ / 40° to 149°F ; 5% to 95% non-condensing																
Power consumption	CIF: 1W VGA: 1.2W																
MTBF	80,000 hours																
IP rating	IP67																

Technical Specifications

Supported Functional Modules (Pre-mounted on Front Plate)

Feature	Properties
IK rating	IK04
Material	PBT-30GF (housing); Germanium (lens)
Software (included)	Video management software MxManagementCenter

Supported Functional Modules (Pre-mounted on Front Plate)

Functional Module	Order Code	Remark
Functional MultiSense module (pre installed)	Mx-F-MSA	with PIR sensor, temperature sensor, illumination sensor and status LED

Connector Box RJ45

Interface	Properties	
Network	100/1000 Mbps	
Allowed cable dimensions for cables connected to the PCB terminals	<i>Conductor cross section</i>	
	AWG	20 - 26
	Rigid	0.14mm ² - 0.5mm ²
	Flexible	0.14mm ² - 0.5mm ²
	Flexible with ferrule	0.25mm ² - 0.34mm ²
Line In	Standard Line In: (0dB) Vrms=1V	

Interface

Line Out

Properties

Headphones with 20mW @ 16 Ohm or 32 Ohm.

Audio inputs as a Line Out function to 10k Ohm impedance of receiver. Audio level while connected to 10k Ohm equals -10dbV

IN / OUT

INPUT

- Contact Closure (no galvanic isolation necessary) or up to 50V AC/DC
- max. length for cables: 50m

OUTPUT

- requires pull-up resistor and external power supply (10mA / max. 50V DC - no AC)
- Output may be loaded with max. 50mA
- max. length for cables: depends on loop impedance of the connected cable.

Dimensions

NOTE! Download the drilling template from the MOBOTIX website: www.mobotix.com > **Support** > **Download Center** > **Marketing & Documentation** > **Drilling Templates**.

CAUTION! Always print or copy the drilling template at 100% of the original size!

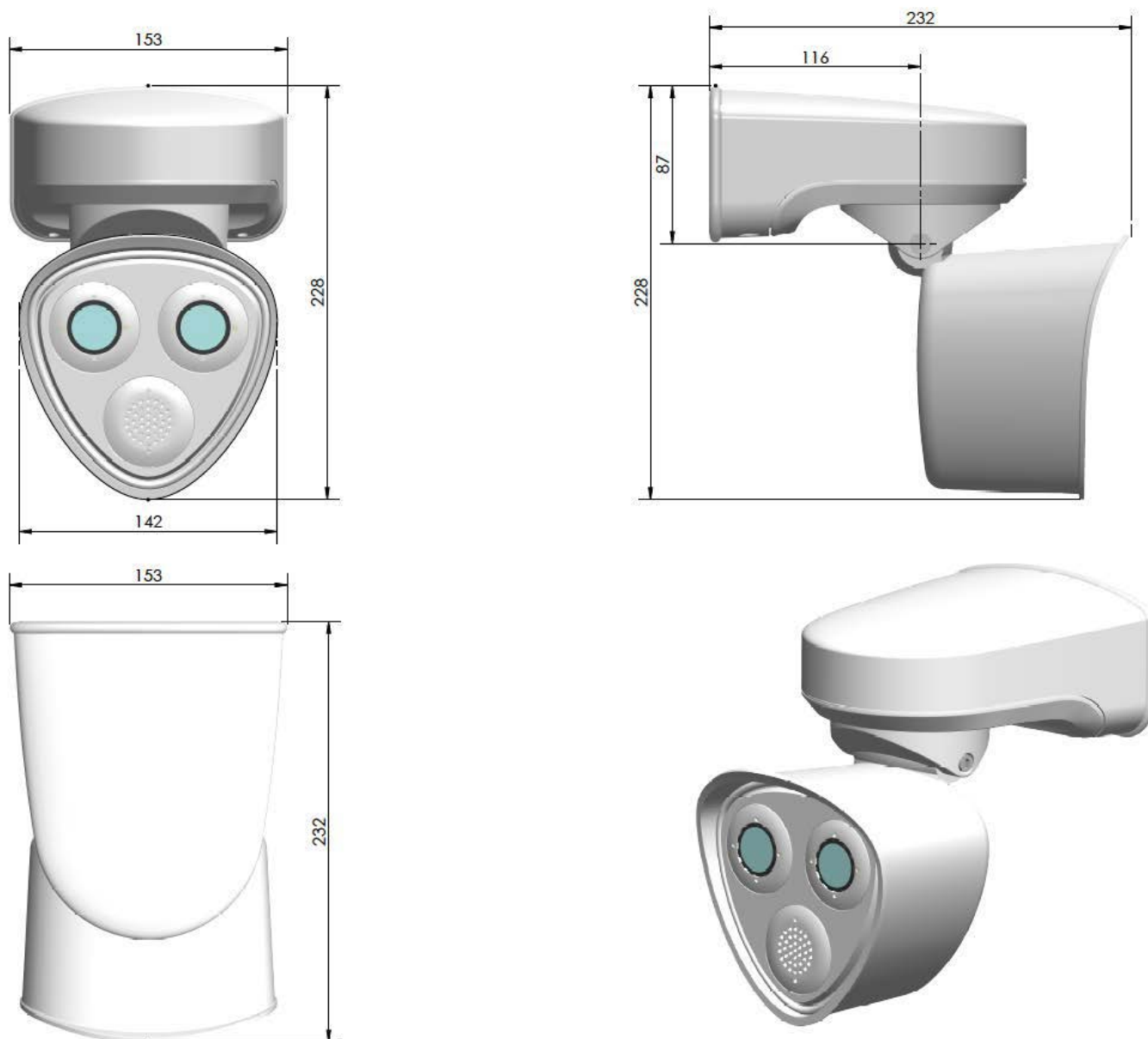


Fig. 1: MOBOTIX M73 EN54: All measurements in mm

Mounting

This section contains the following information:

Before Mounting the Camera	32
Protective Measures	33
Installing an additional Sensor Module	34
Opening the Module Housing	38
Installing the Security Clips	40
Closing the Module Housing	41
Mounting Options	43
Tiltability when mounted	43
Mounting to a Wall	44
Mounting to a Pole	46
Connecting the camera	51
Connecting the Camera to the Network	52
Terminal Connectors	53
Finishing the Installation of the Camera	56

Before Mounting the Camera

CAUTION! Before mounting the camera make sure to copy the IP address ① on the back of the camera housing or on the camera packaging. You will need this address to configure the camera in the browser later on (see [Camera Software in the Browser](#), p. 71).



Fig. 2: IP address on the back of the camera housing

The MOBOTIXM73 EN54 has been designed for wall mounting. Using the pole mount accessory, you can also install the camera on a pole (see [Mounting Options](#), p. 43).

NOTE! Download the drilling template from the MOBOTIX website: www.mobotix.com > [Support](#) > [Download Center](#) > [Marketing & Documentation](#) > [Drilling Templates](#).

CAUTION! Always print or copy the drilling template at 100% of the original size!

Before mounting the MOBOTIX M73 EN54, the following questions should be answered:

- Where and how will the camera be mounted?
- How is the mounting surface level?
- Which other mounting options are available?
- Which accessories might be needed?
- How is the camera connected to the network and how is the power supplied?
- How are the connections furnished from the building?
- What cabling considerations are necessary?
- Do you want to use a larger SD card (see [Replacing the microSD card](#), p. 87)?

The following sections will answer these questions. If you have further questions, please ask your MOBOTIX partner or contact the MOBOTIX support under www.mobotix.com > [Support](#) > [Help Desk](#).

Protective Measures

WARNING! When laying cables indoors and outdoors, the current regulations for cable laying, lightning and fire protection must always be observed.

MOBOTIX cameras and devices are protected against the effects of minor over voltages by a number of measures. However, these measures cannot prevent larger surge voltages from causing damage to the camera. When installing the cameras outdoors, special attention should therefore be paid to lightning protection and the associated dangers for the building and network infrastructure.

In general, you should only have MOBOTIX cameras and devices installed by certified specialist companies that are familiar with the installation and safe operation of network devices and the underlying regulations for lightning and fire protection as well as the current technology for preventing damage from surge voltages.

Notes on Cable Laying

- **Data cable:** Only double-shielded CAT5 cable or better (S/STP) may be used as data cable for the Ethernet interface.
- **Cable length:** The individual cable sections must not exceed the maximum permissible lengths in order to ensure perfect data transmission.
- **Avoidance of induction:** Data cables may only be laid parallel to power or high-voltage lines if the prescribed minimum distances are observed.
- Only original MOBOTIX cables should be used to connect the sensor modules, patch cables and USB cables in order to guarantee weather resistance according to IP66. The plugs supplied must be used if additional cables are required.

Fire Protection

When laying cables for the power supply, the relevant country-specific regulations (e.g. VDE in Germany) and the fire protection regulations valid at the installation site must be observed.

Lightning and Surge Protection

Measures should always be taken to protect this device from electrical surge damage.

Further information on how to avoid damage caused by lightning and over voltage is available from manufacturers of lightning and over voltage protection devices.

Installing an additional Sensor Module

NOTE! One additional optical sensor can be optionally added without losing the EN54 certification.

NOTE! Upon delivery, the socket for an additional sensor module is closed with a blind modules [1.5](#). This closes off the front plate and protects the camera against foreign objects, animals and water.

WARNING! Make sure the power supply to the camera is disconnected before installing or replacing sensor modules.

WARNING! When installing the sensor modules or closing the module housing, make sure that the sensor module cables are not damaged or bent sharply.

CAUTION! Do not operate the camera until all three module receptacles have been fitted with sensor modules or blind modules.

1. **Prepare the sensor module:** Remove the bayonet catch by rotating it counter-clockwise, then remove the blue rubber plug.

NOTE!

If the plastic nut has been installed, remove it.

This nut will **not** be used any more in the mounting process.



2. **Remove the blind module:** Using the gray module wrench [M.1](#), turn the blind module counter clockwise until it stops than pull it out.



3. **Properly assign the sensor module cables.**

The sensor module cables are numbered (small colored rings next to the connectors, see figure below).

CAUTION! The MOBOTIX M73 EN54 can be equipped with one additional optical module at module cable ② only. Any further modification will invalidate the MOBOTIX -EN54 label.



Mounting

Installing an additional Sensor Module

4. Properly connect the sensor module cables:

CAUTION! The lug of the plug must point to the inside of the sensor module when plugged in. If the module cable is not plugged in correctly, the sensor will not be recognized by the camera.

Push the plug of each sensor module cable **firmly** into the connector at the back of the module until the connector is fully inserted into its seat until it doesn't go in any further.



NOTE!

When using blind modules, also insert the connector into the receptacle as shown below.



5. Lock sensor module cable: Apply the blue bayonet catch onto the connector of the sensor module as shown and turn it clockwise until it gently snaps shut.



6. **Insert sensor module:** Push the sensor module into its receptacle. The arrow on the back of the module points to 9 o'clock when looking at the module as shown.



7. **Lock the sensor module:** Using the gray module wrench [M.1](#), turn the sensor module clockwise until it stops.



CAUTION! If you cannot turn the sensor module, it has been inserted the wrong way! Remove the sensor module, rotate it by 180 degrees and insert it again.

8. Repeat steps 3 to 6 for the remaining sensor modules or the blind module [1.5](#), respectively.

CAUTION!

The additional sensor module is not yet protected against theft and unwanted rotation (e.g. due to vibration). It is thus highly recommended to install the security clips [M.4](#). Proceed as outlined in the following:



- [Opening the Module Housing, p. 38](#)
- [Installing the Security Clips, p. 40](#)
- [Closing the Module Housing, p. 41](#)

If you do **not** want to install the security clips, proceed by selecting the [Mounting Options, p. 43](#).

Opening the Module Housing

The following tasks require opening the module housing:

- Inserting security clips at the sensor module or the blind module, respectively.
 - Exchanging a sensor or blind module when secured with security clips.
1. Remove the rubber plug at the back of the module housing (e.g., by using a small screwdriver).



- Using the supplied 5 mm Allen wrench [M.6](#), release the bolt at the back of the module housing. Leave the bolt and washer in the module housing.



- Using the Allen wrench, **cautiously** push from behind onto the bolt and push the front plate out of the front of the housing.



Installing the Security Clips

CAUTION!

To prevent module rotation or removal it is highly recommended to install the security clips.



The security clips [M.14](#) are protecting the sensor modules or the blind module in the front plate of the MOBOTIX M73 EN54 against theft and unwanted rotation (e.g., due to vibration when mounted on a pole or in an automotive scenario).

CAUTION!

Do not use the plastic nuts delivered with the sensor modules to lock the modules in place!



1. **Open the module housing** (see [Opening the Module Housing, p. 38](#)).
2. **Insert the security clips:** Insert a security clip into the groove between the inner and the outer thread of the sensor module. Press it all the way into the groove and make sure it snaps in under the head of the pre-assembled screw ①.



3. **Repeat step 2** to apply security clips to all modules.
4. **Close the module housing:** (see [Closing the Module Housing, p. 41](#)).

Closing the Module Housing

Insert the front plate of the MOBOTIX M73 EN54 to close the module housing.

Mounting

Installing an additional Sensor Module

1. Make sure that the arrow of the front plate (red circle in figure) points upwards when inserting the front plate into the module housing (figure shows front plate with cables removed).



2. Push the front plate into the module housing until it stops.

CAUTION! When pushing the front plate into the module housing, make sure that the sensor module cables are not damaged or bent sharply!



3. Using the supplied 5 mm Allen wrench [M.6](#), tighten the bolt at the back of the camera housing.

4. Push the rubber plug back into the opening of the screw to prevent humidity and dirt from entering the camera.



Mounting Options

You can mount the MOBOTIX M73 EN54 to any even surface on a wall or to poles with up to 180 mm/7.1" diameter using the stainless steel pole mount that is available as accessory. The concealed cabling improves security of the installation.

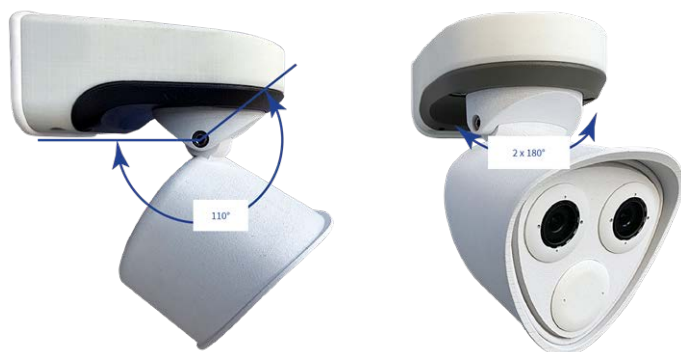
CAUTION! Installation only on flat surface! Unevenness must not exceed 0.5 mm/0.02 in!
Only use genuine MOBOTIX patch cables to guarantee the weatherproofness!

The [mounting plate C.1](#) has been dimensioned to fully cover conventional flush-mounted sockets (without frame) or cavity sockets.

NOTE! Before mounting the camera, determine its ideal position and make sure that the field of view is not obstructed in any way. Once the camera has been mounted, you can fine-tune the image. If the monitored area changes or the camera has to be installed in a different location, you can simply exchange the sensor modules.

Tiltability when mounted

- horizontally: 2 x 180 degrees
- vertically: 110 degrees



Mounting to a Wall

Before mounting the camera, make sure that a network connection with power supply according to the PoE Plus (802.3at-2009) standard is available at the mounting position (see [Connecting the Camera to the Network](#), p. 52).

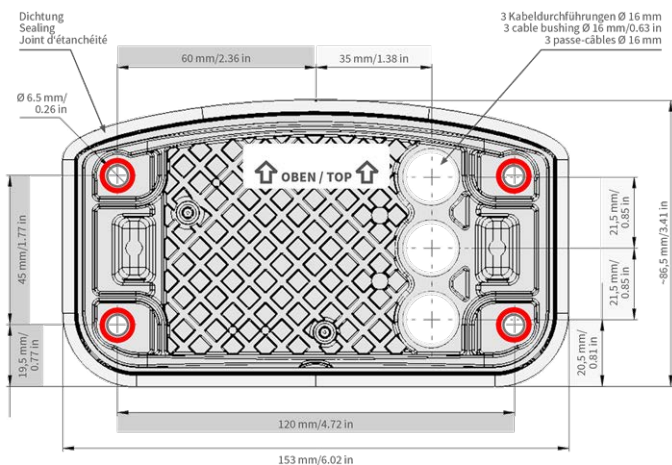
NOTE! Download the drilling template from the MOBOTIX website: www.mobotix.com > [Support](#) > [Download Center](#) > [Marketing & Documentation](#) > [Drilling Templates](#).

CAUTION! Always print or copy the drilling template at 100% of the original size!

NOTE! Do not use the dowels if the installation surface is wood. Only use the screws to fasten the mounting plate directly on the surface. In order to facilitate screwing in wood, the positions should first be pre-drilled using a 2 mm drill bit, for example (drilling depth just slightly less than screw length).

Preparing the Wall

1. Mark the holes for drilling using the drilling template (see [Drilling Template](#), p. 11). When drilling, use a suitable 8 mm drill bit and drill holes with at least 60 mm/1.2" depth.
2. Fully push the dowels [M.13](#) into the holes you drilled.



Prepare the Mounting Plate when using the Connector Box RJ45

1. Connect the supplied patch cable [1.7](#) of the camera with the network connection of the building (see [Connecting the Camera to the Network](#), p. 52).

CAUTION! To prevent damage from condensation, using supplied patch cable [1.7](#) with sealing is mandatory.



2. The supplied network cable [1.7](#) has an integrated rubber sealing. Push the network cable through the top hole of the mounting plate, so that the funnel of the rubber plug ① points toward the camera.



Installing the Mounting Plate

Place the mounting plate over the drilled holes (red circles in figures below) and use the four screws [M.12](#) with one washer [M.11](#) each and the TORX wrench TX20 [M.8](#) to mount the plate to the wall.

CAUTION! Install on flat surface only. Unevenness must not exceed 0.5 mm/0.02 in.

Connector Box RJ45



Fig. 3: Installed and ready for Connector Box RJ45

Mounting to a Pole

CAUTION! Before mounting the camera, make sure that a network connection with power supply according to the PoE Plus (802.3at-2009) standard is available at the mounting position (see [Connecting the Camera to the Network](#), p. 52).

CAUTION! The mounting pole should have a diameter between 60 and 180 mm.

Dimensions of the MOBOTIX M73 EN54 pole mount



Fig. 4: Dimensions M73 EN54 pole mount - rear view

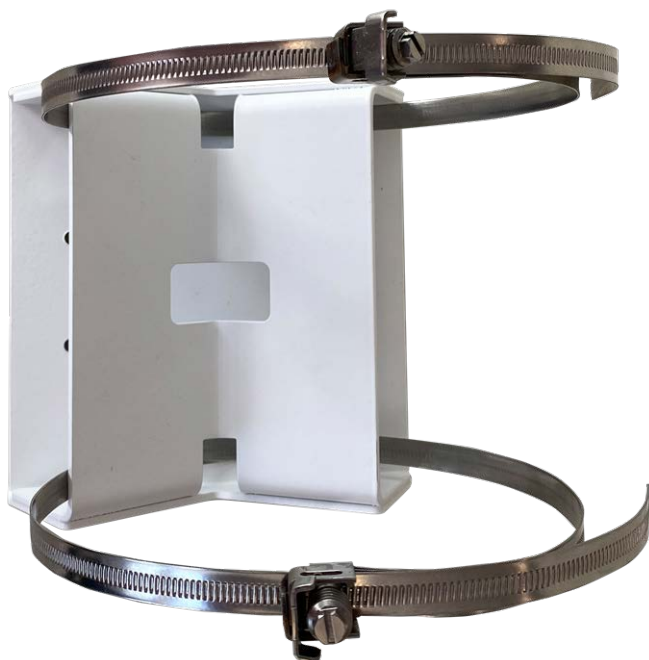
Mounting

Mounting Options



Prepare the Pole Mount

1. Guide the supplied stainless steel straps along the cutouts in the Pole Mount as shown in the figure.



2. Tighten the stainless steel straps on the Pole Mount with a screwdriver. If necessary, the ends of the straps can be cut off.



3. Push the supplied network cable (Connector Box RJ45) through the upper hole ① of the mounting plate

Connector Box RJ45

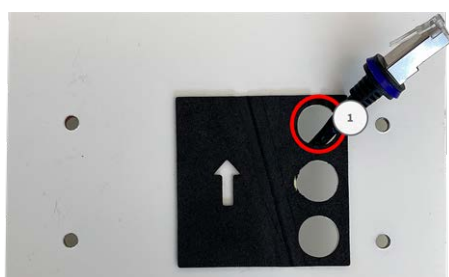


Fig. 5: Prepared for Connector Box RJ45

Prepare the Mounting Plate when using the Connector Box RJ45

1. Connect the supplied patch cable [1.7](#) of the camera with the network connection of the building (see [Connecting the Camera to the Network](#), p. 52).

CAUTION! To prevent damage from condensation, using supplied patch cable [1.7](#) with sealing is mandatory.



2. The supplied network cable [1.7](#) has an integrated rubber sealing. Push the network cable through the top hole of the mounting plate, so that the funnel of the rubber plug ① points toward the camera.



Installing the Mounting Plate

Place the mounting plate over the drilled holes (red circles in figures below) and use the four screws [M.12](#) with one washer [M.11](#) each and the TORX wrench TX20 [M.8](#) to mount the plate to the wall.

CAUTION! Install on flat surface only. Unevenness must not exceed 0.5 mm/0.02 in.

Connector Box RJ45



Fig. 6: Installed and ready for Connector Box RJ45

Connecting the camera

All connections to the camera (network, power supply, inputs/outputs) can be made on the camera's connector box. No further accessories are required for this. A PoE switch provides the camera's power supply.

Connecting the Camera to the Network

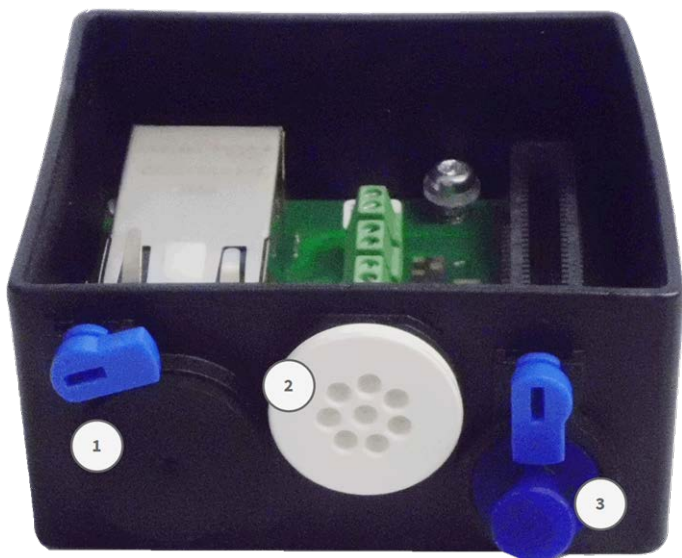
There are two ways to connect the camera to the network - with the Connector Box RJ45 or with the Connector Box LSA. A PoE switch provides the camera's power supply.

NOTE!

- An EN54-4 certified power supply must be used.
- The PoE switch must provide Class 4 according to PoE Plus (802.3at-2009) as well as the 100/1000 Mbps Ethernet interface of the camera.
- The maximum length of the network cable for remotely supplying power is 100 m (300 ft).

Fig. 7: Power supply using PoE switch according to PoE Plus (802.3at-2009).

Network connection with the Connector Box RJ45



1. Remove the black plug from the left-hand opening ① .
2. Plug the supplied [network cable of the camera 1.7](#) into the network connector ② of the connector box.
3. Connect the other wires/cables as required (inputs/outputs, USB).

- Secure the connector of the network cable by turning the blue lock clockwise as shown:



- Using the [TORX wrench TX10 M.9](#) and the two pre-mounted screws (highlighted red in the figure), fixate the connector box on the mounting plate:

NOTE! These are self-tapping screws. Make sure to properly tighten but do not over tighten them.



CAUTION! Make sure the connector box is properly fastened on the mounting plate as shown above. Failing to do so could damage the main board of the camera!

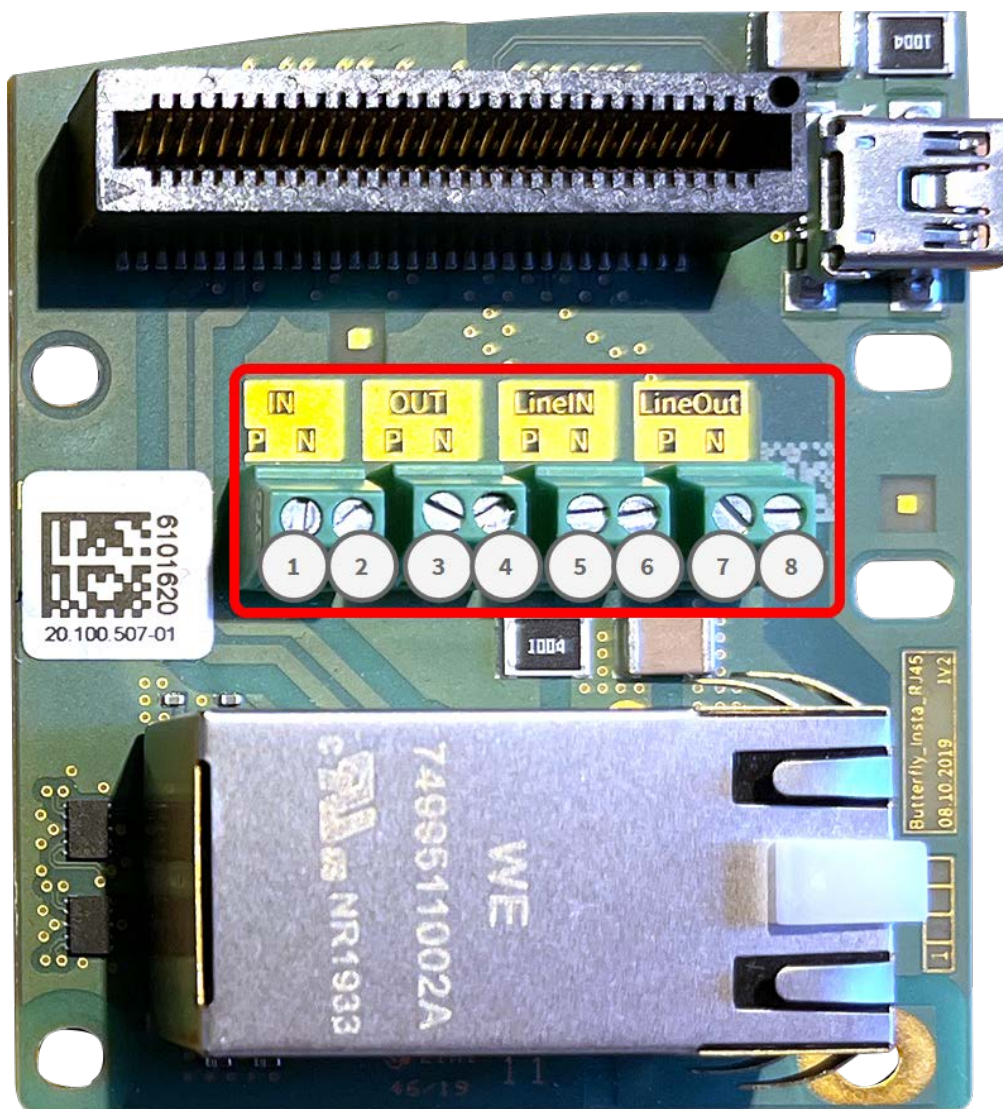
Continue with [Finishing the Installation of the Camera](#), p. 56.

Terminal Connectors

All connections to the camera (network, power supply, inputs/outputs) can be made directly on the connector box which part of the camera. A PoE switch provides the camera's power supply (see [Connecting the Camera to the Network](#), p. 52).

Mounting

Connecting the camera



Terminal connectors Connector Box RJ45

Allowed cable dimensions for cables connected to the PCB terminals

AWG	20 - 26
Rigid	0.14mm ² - 0.5mm ²
Flexible	0.14mm ² - 0.5mm ²
Flexible with ferrule	0.25mm ² - 0.34mm ²

Terminal	Remark
Line In	Standard Line In: (0dB) V _{rms} =1V
Line Out	Headphones with 20mW @ 16 Ohm or 32 Ohm. Audio inputs as a Line Out function to 10k Ohm impedance of receiver. Audio level while connected to 10k Ohm equals -10dbV

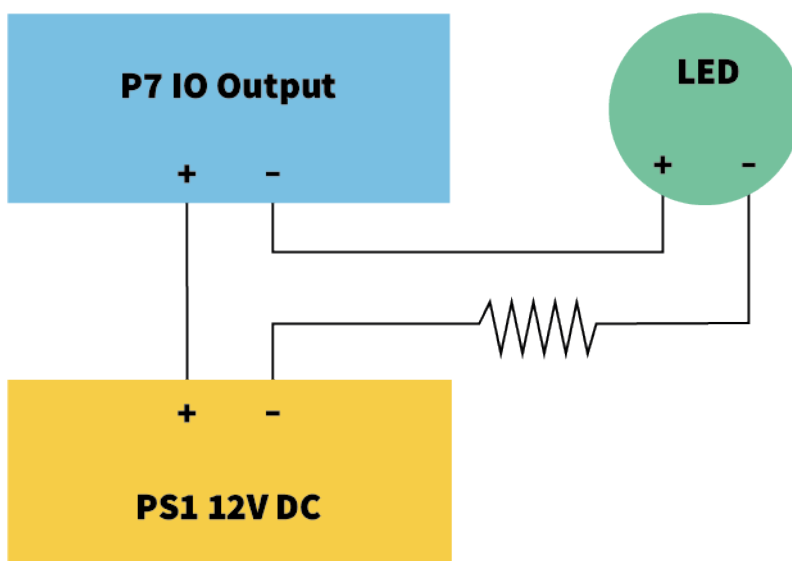
Terminal	Remark
IN	<ul style="list-style-type: none"> ▪ Contact Closure (no galvanic isolation necessary) or up to 50V AC/DC ▪ max. length for cables: 50m
OUT	<ul style="list-style-type: none"> ▪ requires pull-up resistor and external power supply (10mA / max. 50V DC - no AC) ▪ Output may be loaded with max. 50mA ▪ max. length for cables: depends on loop impedance of the connected cable.

Example: switching an LED light using the P7 outputs

The outputs in the O Interface board are using an optocoupler with an open collector.

These outputs will require the use of an external DC power supply up to 50 volts with a pull-up resistor and support a maximum current of 10mA. They are not capable of dry connect closure or direct use with AC power.

The example shows a simple low voltage low current application such as switching an LED light using the P7 outputs.



The value of the pullup resistor depends on the forward voltage of the LED at the specific current you want to run through it.

EXAMPLE:

- Amperage through LED: 10mA
- LED Forward Voltage @ 10mA: 2 V
- Power supply: 12V DC
- Resistor value = $(12V - 2V) / 10mA = 1 \text{ k}$

Finishing the Installation of the Camera

To finish the installation of the MOBOTIX M73 EN54, the entire camera is mounted onto the mounting plate using the two lock screws. The connections of the camera are established automatically. The installation is finished by applying the remaining cover plugs to ensure the water-proofness of the housing.

You will need:

- Allen wrench 5 mm [M.6](#)
- 2 housing plugs silicone white [M.3](#)
- 2 caps for screw plastic white [M.15](#)



1. Press the camera body onto the installed mounting plate, so that the wall sealing snugly seals off the camera body.



Mounting

Finishing the Installation of the Camera

2. Tighten the two Allen screws using the Allen wrench [M.6](#).



3. Insert the two housing plugs [M.3](#) firmly into the holes of the fastening screws.



4. Roughly point the camera into its direction of view.
5. Fixate the camera by tightening the two Allen screws (① , panning) and the two Allen screws (② , tilting) of the center pivot.

NOTE! To properly point the camera into the desired direction of view, read the section [Adjusting the Camera](#).



Mounting

Finishing the Installation of the Camera

6. Press the two covers [M.15](#) onto the two Allen screws (② , upper figure) of the center pivot.



Operating the Camera

This section contains the following information:

Getting Started	62
LED states	62
Boot Options of the Camera	63
Network Settings	65
Windows	66
Mac	67
Linux / Unix	67
Network Settings on the Camera in the Webbrowser	67
Network Settings on the Camera in MxMC	68

Getting Started

You can use the MOBOTIX M73 EN54 with any current browser – or with MxManagementCenter.

You can download MxManagementCenter free-of-charge from www.mobotix.com > [Support](#) > [Download Center](#) > [Software Downloads](#).

1. **Connect the camera to the network.** The network cable will also provide power to the camera.
 1. **Establish a connection to the camera and adjust the network settings if required:** By factory default, MOBOTIX cameras are booting as DHCP client with an additional fixed IP address in the 10.x.x.x range (e.g., 10.16.0.128). Local computer networks usually have IP addresses in the 172 or 192 ranges. Depending on whether a DHCP server is present on the local network or if the network has been set up to use fixed IP addresses, there are several possibilities for establishing a connection to the camera and to change its [Network Settings, p. 65](#):
 - **Network with dynamic IP addresses**

Using a browser: If you know the IP address that the DHCP server assigned to the camera, simply enter that address in the browser address bar to directly connect to the camera

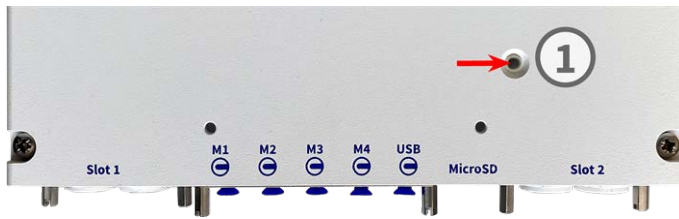
Using MxManagementCenter: With MxManagementCenter, you can show and integrate the camera without having to know its current IP address.
 - **Network with static IP addresses**

In order to access the camera, it must have an IP address within the range of the local network. To set the camera's network parameters, you can use one of these methods:

Manually using a web browser: You may have to adjust the network settings of your computer.
 - **Automatically using MxManagementCenter:** The camera is displayed in MxManagementCenter although the IP address is not part of the local network, allowing you to reconfigure its settings.
 2. **Configure camera:** You can use the user interface of the camera in a browser or in MxManagementCenter.

LED states

Camera LED on top of the camera body displays the following states by default:



LED status	Meaning
green steady on	normal operation
green steady flashing	technical error or misconfiguration

Boot Options of the Camera

By default, the camera starts as DHCP client and automatically tries to get an IP address from a DHCP server. To start the camera in a mode different from the default mode, you can activate the boot menu of the camera.



NOTE! Pressing the key of the camera will let the camera announce the current IP address of the camera on the speaker (if a speaker is attached to the camera).

1. Prepare the camera:

- Disconnect the camera's power supply.
- Remove the allen screw ② using the Allen wrench 2.5 mm [M.7](#). Take care not to lose the plastic washer.
- Take a suitable tool for operating the boot menu (e.g. the enclosed screwdriver [M.10](#) or the Allen wrench 2.5 mm [M.7](#).) **but do not use a paper clip or pointed objects!**
- Reconnect the power supply of the camera.

2. **Activate the boot menu:** The red LED ① lights up 5 to 10 seconds after establishing the power supply and will stay on for 10 seconds. Press the key by inserting the tool into the hole ②. The camera enters the boot menu, ready for selecting one of the boot options. The LED will flash once. The flash signal will be repeated every second.

Operating the Camera

Boot Options of the Camera

NOTE! The number of flashes corresponds to the current boot option.

3. **Switch the boot option:** Briefly press the key (< 1 sec). After the last boot option, the camera returns to the first boot option (LED flashes once).

LED flashes	Boot Option	Meaning	Audio Confirmation*
1x	•/•	This option is not supported on this camera model.	•/•
2x	Factory Defaults	Starts the camera with factory defaults (factory default IP address, users and passwords will not be reset).	Boing
3x	Automatic IP Address	Starts the camera as DHCP client and tries to obtain an IP address from a DHCP server. If a DHCP server cannot be found or no IP address can be obtained, the camera starts with its factory default address.	Boing-Boing
4x	Recovery System	Starts the camera with the recovery system, e.g., in order to recover from a failed update of the camera software.	Alarm Sound

*Only on cameras with audio option and installed speaker.

4. **Select a boot option:** Press the key longer (> 2 sec). The camera confirms the selection by flashing the LED rapidly for 3 seconds. After 20 sec, the camera will play a sound according to the table above.
5. Insert the Allen screws and the plastic washer using the Allen wrench 2.5 mm M.7 and take care not to over-tighten the screw.

NOTE! If you do not select a boot option, the camera will resume its normal boot process after a certain time.

CAUTION!

Note that you can restore specific parts of the camera configuration afterwards by using "Restore" to re-apply the settings still stored in the camera.

As opposed to resetting the camera using **Admin Menu > Reset configuration to factory defaults**, the user information will not be reset if the camera is booted using the factory defaults.

When starting the camera with DHCP support (option 2), make sure that the network has a properly functioning DHCP server. If this is not the case, the camera cannot obtain a valid IP address and will fall back to its last IP address.

You should also make sure that the cameras always get the same IP addresses by mapping the MAC addresses of the cameras to the desired IP addresses.

Network Settings

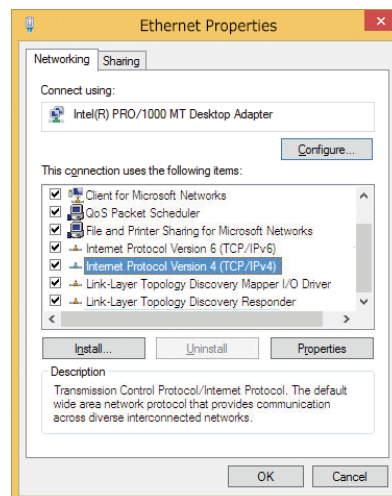
Once the camera has been connected to the network, you need to set up the MOBOTIX camera's network interface accordingly. This step involves setting up and checking the network parameters of the camera. If your network has an active DHCP server or if it is already running on a 10.x.x.x network with a 255.0.0.0 network mask) you do not need to change the camera's network parameters. You can directly access the camera. If neither your network nor your computer use an IP address in the 10.x.x.x network (e.g. a 192.168.x.x or 172.x.x.x network), you should follow one of the following methods for changing the camera's network parameters:

- Manual setup
- Automatic setup using MxManagementCenter

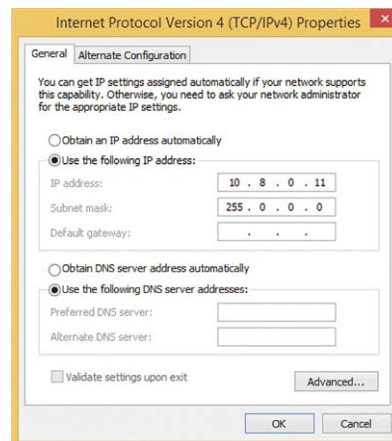
NOTE! For the following examples, we will use a camera with the factory IP address 10.16.0.99. Replace this IP address with the IP address of your camera. You will find this address on a small sticker on the camera. Make sure that the IP addresses used in the following examples are not used by any other devices on your network.

Windows

1. Open the Windows **Control Panel > Network and Internet > Network and Sharing Center > Change Adapter Settings > Ethernet.**



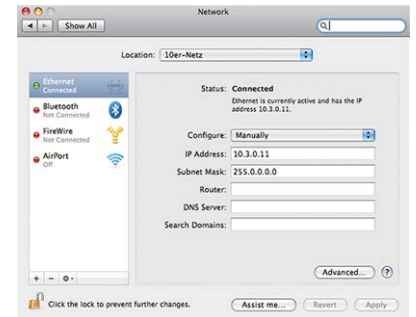
2. Right-click on the relevant network adapter and select **Properties.**
3. Open the properties of **Internet Protocol Version 4 (TCP/IPv4).**



4. Activate **Use the following IP-address.** Enter an IP address in the 10.x.x.x range in this field (e.g. 10.16.0.11).
5. Click on **OK** to apply the settings.

Mac

1. Open **System Settings > Network**.



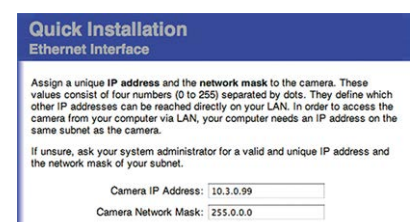
2. Click on **Ethernet** and in the **Configuration** field, select the *Manual* list entry and enter an IP address in the 10.x.x.x IP address range (e.g., 10.16.0.11).
3. Click on **Apply** to apply the settings.

Linux / Unix

1. Open a terminal as `root` user.
2. Enter the following command: `ifconfig eth0:1 10.16.0.11`.
3. The computer now has the additional IP address 10.16.0.11.

Network Settings on the Camera in the Webbrowser

1. Use a web browser to access the web interface of the MOBOTIX camera and enter the factory IP address (e.g. 10.16.0.99).



2. Click on the **Admin Menu** button in the user interface of the camera. The Quick Installation automatically starts after entering the access credentials of the admin user.

NOTE! Factory access credentials:

*User name:*admin

*Password:*meinsm

NOTE! You can also run the Quick Installation later on (**Admin Menu > Network Configuration > Quick Installation**; see Reference Manual).

3. Enter the network parameters of the camera in the course of the quick installation.

NOTE! You can also change the network parameters later on by running **Admin Menu > Network Configuration > Quick Installation**.

4. Reboot the camera to apply the network settings.

Network Settings on the Camera in MxMC

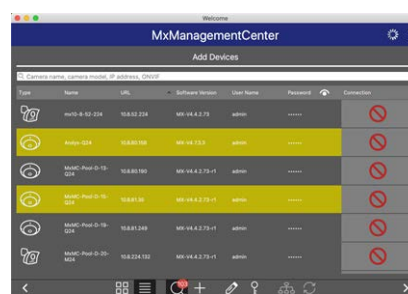
MxManagementCenter is a video management software for setting up and using the entire video surveillance system that provides a range of functions for different tasks and user groups. You can download the newest release of MxManagementCenter from the MOBOTIX website (www.mobotix.com > Support > Download Center > Software Downloads, MxManagementCenter section).

When starting MxManagementCenter for the first time, the configuration wizard opens and automatically starts searching for MOBOTIX cameras. The number of found cameras is shown as a counter next to the **Add Devices** icon. This number is updated automatically if the number of MOBOTIX cameras on the network has changed (i.e., by connecting new/disconnecting existing cameras).

1. Click on **Add Devices**. The cameras are displayed either in a list or as tiles. Use the List and Tile buttons to change the display mode.



The application automatically monitors and displays the operating status of all cameras using corresponding icons.




EXAMPLE:

- The camera is not in the same subnet as the computer.
- The user name and password of the camera are not known.

NOTE! Using the Bonjour service ([en.wikipedia.org/wiki/Bonjour_\(software\)](https://en.wikipedia.org/wiki/Bonjour_(software))), the application finds not only MOBOTIX cameras on the same subnet, but also in other subnets. Normally, you would not be able to establish any connection to cameras in a different network or subnet.

NOTE! This is the case, for example, if you are integrating cameras into a network without DHCP server (i.e. with fixed IP addresses) and the IP address range is different from the 10.x.x.x range supported by the cameras in addition to DHCP.

MxManagementCenter can automatically configure such a camera so that it is "integrated" into your existing network.

2. Select the camera you want to set up and click on **Edit Network Settings**  at the bottom of the program window. The **Change Network Settings for Selected Devices** dialog opens.

3. Enter the IP address and the subnet mask of the selected camera.



NOTE! The IP addresses of the other cameras are automatically incremented by 1.

4. Click on **Apply** to apply the settings.

NOTE! For more information on this feature, please read the MxManagementCenter online help or the Tutorial (see www.mobotix.com > Support > Download Center > Documentation > Brochures & Guides > Tutorials).

Camera Software in the Browser

When recording images or video sequences, you can choose to store either the visible image area of the live image or the full sensor image. This also allows examining the parts of an image or video that had not been visible in the real-time image section on display at the time of the recording.

Instead of using a web browser, you can also download the free MxManagementCenter from the MOBOTIX website (www.mobotix.com > Support), which allows displaying multiple cameras on one monitor, allows for comfortably searching and evaluating the alarm video clips with audio and provides alerting features. For mobile iOS and Android devices, the free-of-charge MOBOTIX MOBOTIX LIVE App is available.

This section contains the following information:

Access the camera's website in the browser	73
Basic Settings	73
Configuring Sensor Modules	74
EN54 Compliant Camera Configuration	75
Create Visual Alarm Profile	75
Set an Alarm Acknowledge Softbutton	76
Edit the Softbutton Menu	77
Arming the Camera	77

Creating Thermal Events	78
Configuration of an action group	78
Acknowledge Alarm via Softbutton	80
Further Information	81

Access the camera's website in the browser

Once the power and network connection of the MOBOTIX have been established, you can open the interface of the camera software in a web browser.

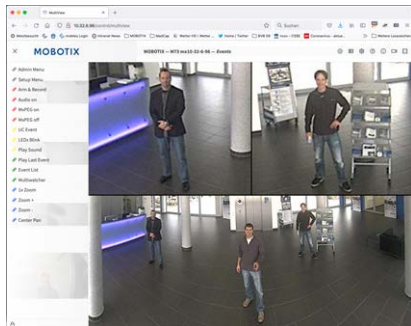


Fig. 8: The interface of the camera software

1. Enter the camera's IP address in the address field of a web browser.

NOTE! Make sure to copy the IP address camera from the back of the camera housing or from the sticker.

Basic Settings

Password for the Administration Menu: Accessing the administration area of the camera (Admin Menu button) in the browser is only possible after entering a user name and password.

- **Default user name:** admin
- **Default password:** meinsm

NOTE! You must change the password when logging in for the first time.

Make sure that you store information on user names and passwords in a secure place. If you lose the administrator password and cannot access the Administration menu, the password can only be reset at the factory. This service is subject to a service charge.

The Quick Installation wizard will appear automatically when accessing the Administration Menu for the first time. It provides an easy method to adjust the basic camera settings to the current application scenario. For security reasons, it is highly recommended to change the default administrator password after the camera has been configured properly.

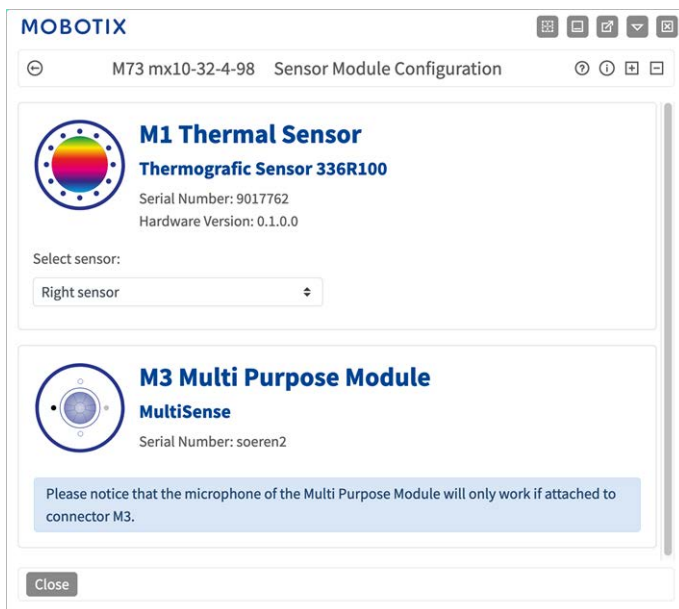
Enter the user name and password exactly as shown above. Note that all entries are case-sensitive.

Administering the camera: You can modify the camera configuration in the Administration Menu or the Setup Menu:

- **Admin Menu:** This menu contains the basic configuration dialogs of the camera (e.g. passwords, interfaces, software update).
- **Setup Menu:** This menu contains the dialogs for configuring the image, event and recording parameters. Some of these settings can be changed using the corresponding Quick Controls in the Live screen.

NOTE! For more information, consult the Reference Manual of the camera.

Configuring Sensor Modules



Using different combinations of sensor modules of the MOBOTIX M73 EN54 will have an influence on the display modes and configuration variants that are available.

An MOBOTIX M73 EN54 will automatically check and verify the installed sensor modules upon its first start and at every reboot thereafter (e.g., focal length, Day or Night variant). Please note the following:

- A Thermal Sensor Module, must be attached to connector **M1 (Thermal Sensor)**.
- If only one sensor module is attached, the camera will behave like a mono camera (i.e., there is no automatic Day/Night switching).
- If the modules are not exchanged within the first 12 operating hours, the camera will store the information of new sensor modules in the camera configuration.
- The camera will check the configuration on every reboot to see if the stored sensor modules are still present. If changes of the sensor module configuration have been detected (e.g., if a sensor module had to be replaced), the camera will show a corresponding message in the live image.

If required, the module configuration can be adjusted, e.g. you can define in which camera image (left or right) the sensor module should be displayed in a double image display.

1. Got to **Admin Menu > Hardware Configuration > Sensor Module Configuration**
2. Select the corresponding sensor module types

Do the **Sensor Module Configuration** in the following cases:

- **Switching the displayed camera images:** You want to show the left-hand camera image on the right (and vice versa), without having to physically swap the module connectors at the camera itself.

NOTE! Thermal sensor cannot be swapped, because they are pre-installed on a custom thermal front plate.

- **Exchanging sensor modules:** In this case, the MOBOTIX M73 EN54 will display a message box and will log a system message to inform you that sensor modules have been exchanged (see also [Installing the Sensor Modules to the Thermal Front Plate](#)).

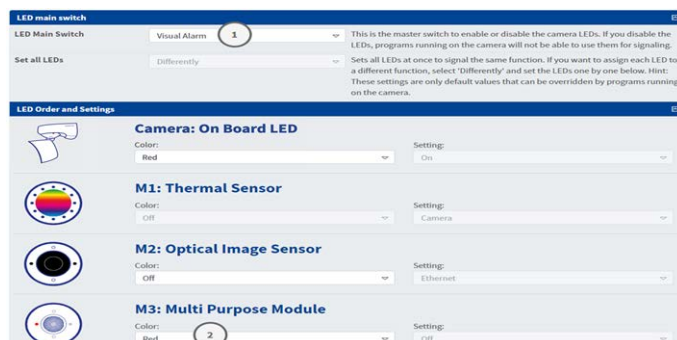
CAUTION! Exchanging sensor modules may result in the loss of EN-54 certification.

- **Adding/activating sensor modules:** You can activate modules that had been deactivated before.
- **Switching off/removing sensor modules:** If required, you can deactivate connected modules in this dialog.

For more information, consult the Reference Manual of the camera.

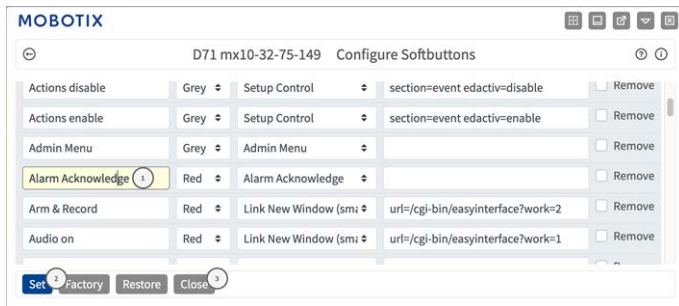
EN54 Compliant Camera Configuration

Create Visual Alarm Profile



1. Go to **Admin Menu > Camera Administration > LED Configuration**.
2. In section LED Main Switch set **LED Main Switch** ① to **Visual Alarm**.
3. In section Order and Settings set **Multi Purpose Module** ② to **Color: Red**.

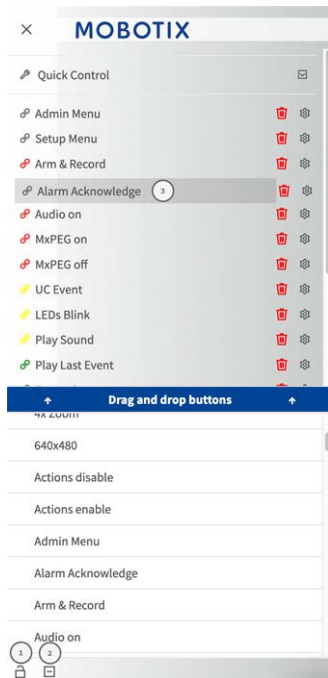
Set an Alarm Acknowledge Softbutton



1. Go to **Admin Menu > Page Administration > Softbuttons**.
2. Optionally rename the "Acknowledge" button to "Alarm Acknowledge" ① .
3. Click **Set** ② to confirm the setting temporarily or **Close** ③ to permanently store the configuration of the camera.

Also see [Edit the Softbutton Menu, p. 77](#).

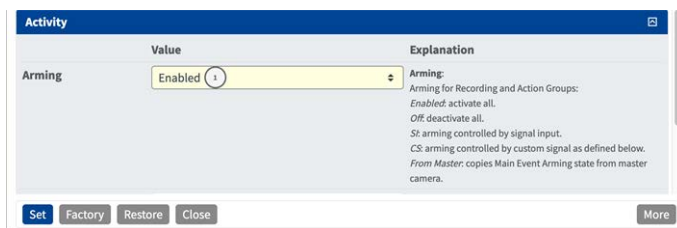
Edit the Softbutton Menu



1. Click on the lock icon to unlock the main menu ①
2. Click on the plus icon ② to display all available softbuttons.
3. Drag and drop the Alarm Acknowledge Button to the desired position in the Softbutton Menu ③ .

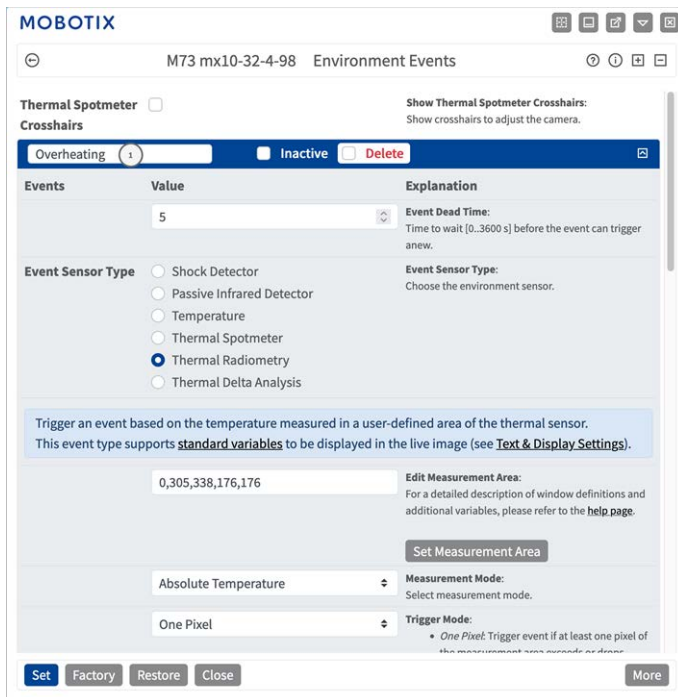
Also see [Set an Alarm Acknowledge Softbutton, p. 76.](#)

Arming the Camera



1. Go to Setup **Menu > General Event Settings.**
2. In section Activity set Arming to **Enabled** ① .

Creating Thermal Events



1. Go to **Setup Menu > Event Control > Event Overview**.
2. In section Environment Events click Edit to define a profile.
3. Enter a meaningful name ① for the Event Profile.
4. As Event Sensor Type select Thermal Radiometry.

NOTE! Thermal Sensor Types and their configurable parameters are only available if a suitable thermal image sensor has been attached and is running properly.

5. Configure the event profile according to your requirements.
For more information please see the Camera Online Help.

Configuration of an action group

CAUTION! To use events, trigger action groups or record images the general arming of the camera must be enabled ([http\(s\)/<camera IP address>/control/settings](http(s)/<camera IP address>/control/settings))

An action group defines which action(s) is (are) triggered by the event.

1. In the camera web interface, open: **Setup Menu / Action Group Overview** ([http\(s\)://<camera IP address>/control/actions](http(s)://<camera IP address>/control/actions)).

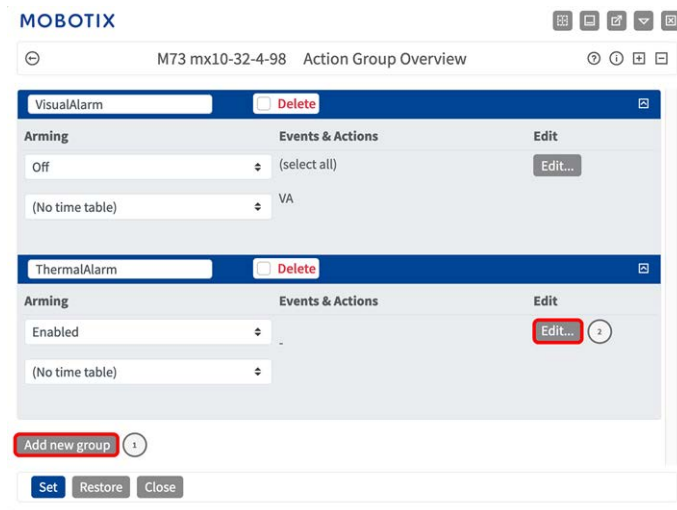
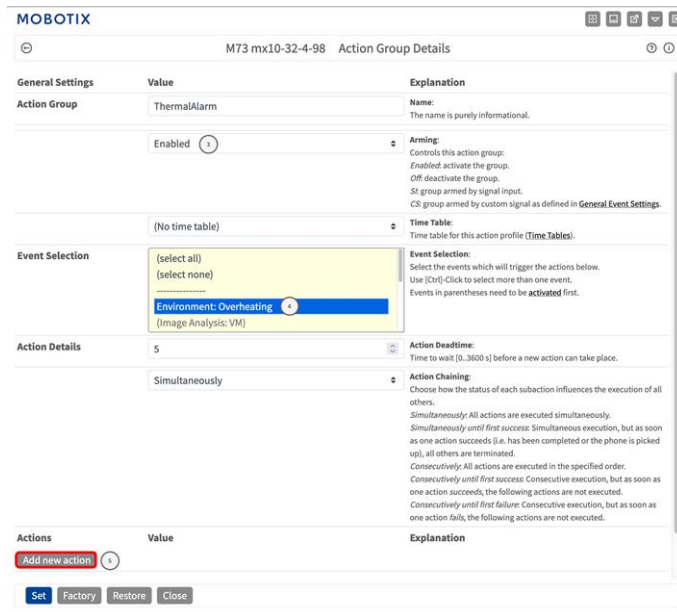
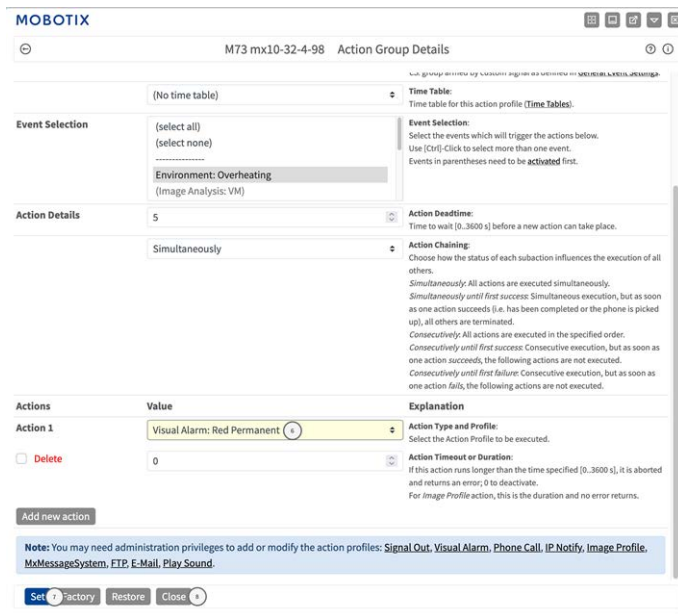


Fig. 9: Defining Action Groups

2. Click **Add new group** ① and give a meaningful name.
3. Click **Edit** ②, to configure the group.



1. Enable **Arming** ③ of the Action Group.
2. Select your message event in the **Event selection** list ④. To select multiple events, hold the shift key.
3. Click **Add new Action** ⑤.
4. Select **Visual Alarm: Red Permanent** from list **Action 1** ⑥.



5. Click **Set** ⑦ to confirm your settings.
6. Click **Close** ⑧ to save your settings permanently.

To acknowledge the alarm you can use a softbutton (see [Acknowledge Alarm via Softbutton](#), p. 80).

Acknowledge Alarm via Softbutton



1. In case of an Overheating Alarm Event, you can acknowledge the Alarm by clicking the corresponding Softbutton (see [Edit the Softbutton Menu](#), p. 77).

Further Information

- For further Information about the camera please see the Camera Online Help.
- For further information about the MOBOTIX Advanced Radiometry App see <https://www.-mobotix.com/en/media/5263>.

Maintenance

Opening the Camera Body	84
Replacing the microSD card	87
Cleaning the Camera and Lenses	88

Opening the Camera Body

E. g. to replace the microSD card of the MOBOTIX M73 EN54, it is necessary to open the camera body.

The entire camera is mounted onto the mounting plate using the two lock screws.

You will need:

- Allen wrench 5 mm [M.6](#)



Fig. 10: Installed MOBOTIX M73 EN54

Procedure

1. Remove the two housing rubber plugs [M.3](#) from the holes of the fastening screws.



Fig. 11: Remove rubber plugs

2. Open the two allen screws using the Allen wrench [M.3](#).



Fig. 12: Open allen screws

3. Carefully pull the camera body off the mounting plate.



Fig. 13: Pull the camera body off the mounting plate

Replacing the microSD card

CAUTION! To remove, insert or exchange the microSD card, the camera must be disassembled.

Before removing the microSD card, deactivate the recording function and restart the camera. Non-observance can lead to data loss!

The microSD card must not be write-protected!

Do not touch the circuit board when exchanging the microSD card!

Step by step

1. **Deactivate storage:** If storage on microSD card is still activated deactivate it in the cameras web interface: **Admin Menu > Storage on external file server / flash media**, then reboot the camera .
2. **Open the camera body:** see [Opening the Camera Body](#), p. 84

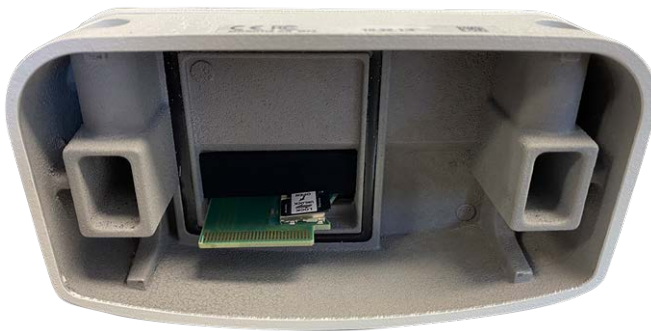


Fig. 14: Open camera body

3. **Unlock the microSD card holder:** Carefully flip up the metal cover of microSD card (e.g. with a fingernail).

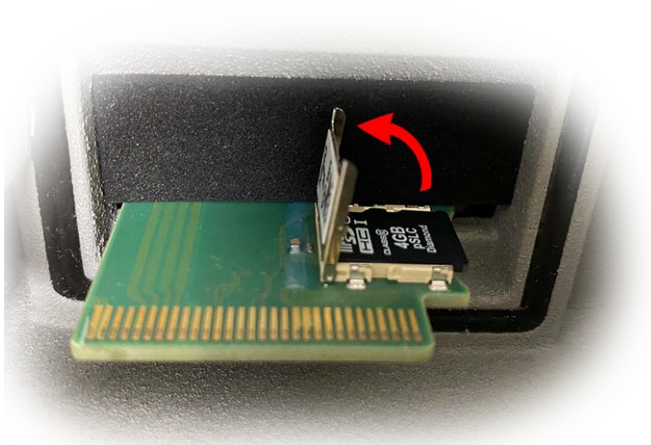


Fig. 15: Unlock microSD card holder

4. **Remove the microSD card**

5. **Insert microSD card:** Insert the new microSD card in the holder and close the metal cover with light pressure until it snaps in.
6. **Close the camera body:** (see [Finishing the Installation of the Camera, p. 56](#)).
7. **Activate storage:** If the microSD card already is formatted with MxFFS has been inserted, storage can be activated in Admin Menu > Storage on External File Server/Flash Device. After rebooting the camera, recording is activated automatically. .

Cleaning the Camera and Lenses

Clean the camera housing using a mild alcohol-free detergent without abrasive particles.

To protect the lens protection glass, only use the supplied mounting supplies (see [Mounting Supplies: Scope of Delivery, p. 1](#)).

Cleaning the lens protection glass

- Use the wide end of the gray module wrench [M.1](#) to remove/install the lens protection glass. The narrow side of the wrench is used to adjust the sharpness (focal length) of the tele lenses.
- You should clean the lens protection glasses and domes regularly using a clean, lint-free cotton cloth. If the dirt is more persistent, add a mild alcohol-free detergent without abrasive particles.
- Make sure you instruct cleaning personnel on how to clean the camera.

MOBOTIX

BeyondHumanVision

[EN_08/23](#)

MOBOTIX AG • Kaiserstrasse • D-67722 Langmeil • Tel.: +49 6302 9816-103 • sales@mobotix.com • www.mobotix.com

MOBOTIX is a trademark of MOBOTIX AG registered in the European Union, the U.S.A., and in other countries. Subject to change without notice. MOBOTIX do not assume any liability for technical or editorial errors or omissions contained herein. All rights reserved. © MOBOTIX AG 2019